

## Adaption Console AP02-3 for KT 210

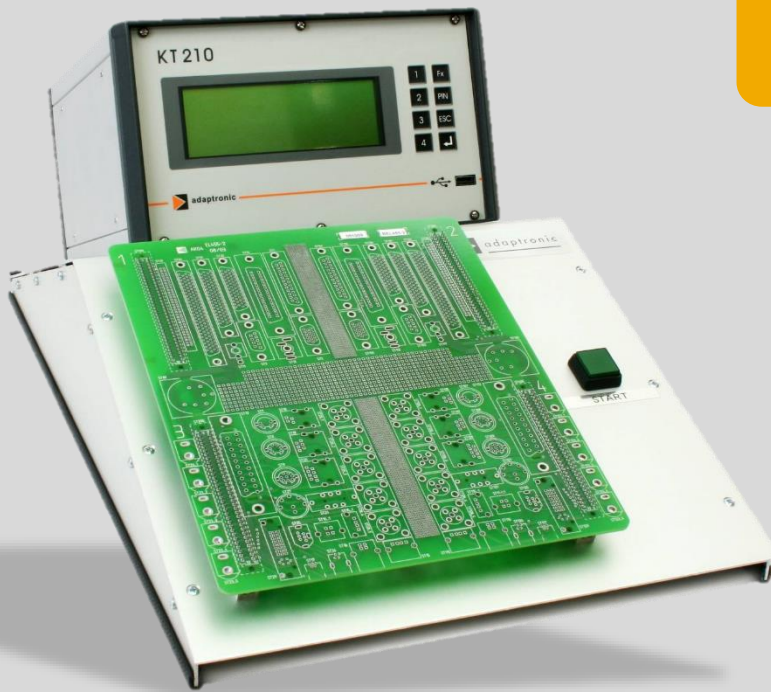


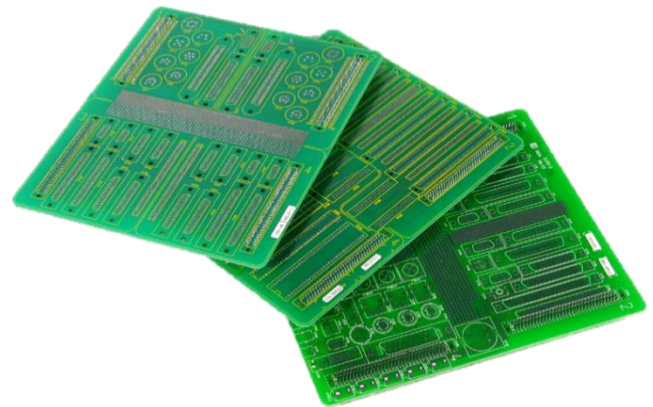
Image: Adaption console with KT 210 and adaption board

Console housing made of aluminum for attaching adaption boards AK0x, with storage space and holding fixture for the adaptronic wiring tester KT 210.

Adaption boards for attaching at the KT 210 adapter console in different types.



Image: adapter console with KT 210



- ▶ 4 x 64 test points on connector strips
- ▶ 4 adapter cables for the connection to the KT 210
- ▶ Test start key integrated in the console; connection at the Extern Interface, incl. pin number probe
- ▶ Dimensions: 310 mm x 125 mm x 530 mm (W x H x D) without wiring tester

- ▶ 3 different types available
- ▶ Application specific connector assembly by the customer
- ▶ 4 pressed-in connector strips for accurately fitting onto the adaption console
- ▶ Adaption boards can be changed easily and without tools


**Adaption console AP02-3 (1AP02-3)**

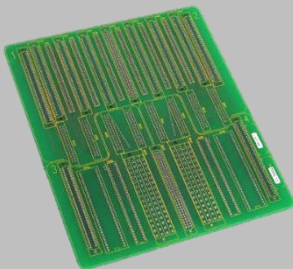
Console housing made of aluminum for attaching adaption boards AK0x:

- with space and mounting support for the adaptronic tester KT 210
- 4 x 64 test points on connector strips
- 4 adapter cables for the connection to the KT 210
- Test start key integrated in the console; connection at the Extern Interface, incl. pin number probe
- Dimensions: 310 mm x 125 mm x 530 mm (W x H x D)

**Available adaption boards:**
**Adaption board AK02 (BEL210-1)**

For following connectors solder points are already provided:

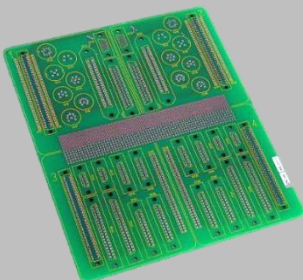
- Flat ribbon cable 6, 8, 10, 14, 16, 20, 24, 26, 34, 36, 40, 50, 60, 64, 96-way
- IC socket connectors 14, 16, 18, 20, 24, 28, 40-way


**Adaption board AK03 (BEL211-1)**

For following connectors solder points are already provided:

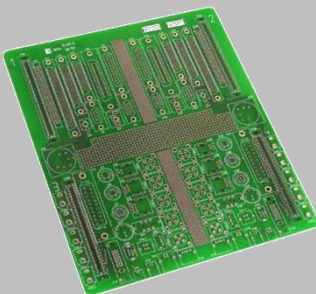
- D-Sub connector 9, 15, 25, 37, 50-way
- VGA connector 15-way
- Centronics connector 14, 24, 36, 50-way
- Universal grid area 2.54 mm, 1.27 mm
- Several round connectors:

SFR 30	DIN 41254	SFR 40	
SFR 50	DIN 41254	SFR 50/6	DIN 45322
SFR 50/7	DIN 45327	SFR 60	DIN 45322
SFR 70		SFR 71	DIN 45329
SFR 80		SFR 81	DIN 45326
SFR 120			


**Adaption board AK04 (BEL455-2)**

For following connectors solder points are already provided:

D-Sub connector 9 and 25-way	HD-Sub connector 15-way
Centronics connector 36-way	Mini DIN 4, 6 and 8-way
Jack connector 3.5 mm	SCART connector 26-way
DC POWER 2.1 and 2.5 mm	USB-A, USB-B and USB mini-B
RJ11, RJ12 and RJ45	TAE socket F und N
Cinch 8-way	Mini-Delta-Ribbon 100-way
IEEE1394 Firewire 4 and 6-way	DIN 5-way
BNC 10-way	MicroCross DVI
SCSI 50 and 68-way	Multi connector XLR / jack 6.35 mm 3-way
male/female terminal strip 2 mm grid 64-way	Universal grid area 2.54 mm, 1.27 mm



© Copyright 2017, adaptronic Prüftechnik GmbH. All rights reserved. All mentioned features and functions are subjects to change. This document is only for information.

Images contain options. adaptronic is a word-brand of adaptronic Prüftechnik GmbH. Mentioned brands and trademarks are property of the respective brand owners.