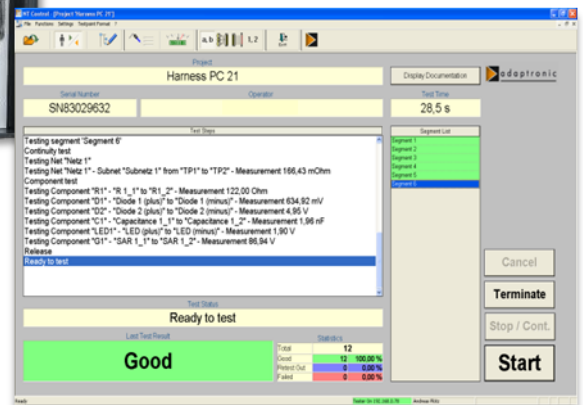


Image: NT 230 with options



NT 230

Smallest high voltage tester of the NT series

- Easy operation via PC with control software NT Control
- Comfortable test program editors
- Extensive display possibilities and tools for fault location in the unit under test
- Extensive result reporting to file, to printer or via database connection*
- Up to **512** test points
- Low voltage tests up to **12 VDC / 400 mA**
- High voltage tests up to **1000 VDC**
- Continuity test, short circuit test, insulation test and component test
- Remote maintenance

The NT 230 is characterized by an outstanding price performance ratio and is especially optimized for the operation in connection with test consoles:

- Up to 27 digital I/Os*
- Support of adapter LEDs
- Push-back test
- Assembly help during the manufacture of wiring harnesses
- Space saving design
- Interfaces for cutter, marker etc.

* optional

TESTING

NT 230

Test program generation and testing with NT Control

With the user-friendly software NT Control it is comfortable to generate, edit and to manage test programs as well, as to carry out tests. The data transfer between a PC with NT Control and a NT 230 takes place via network. NT Control is necessary for the operation of the NT 230 and part of the delivery. NT Control can be run on a PC* with the operating system Microsoft Windows® 7 Pro up to Windows® 10 Pro (country variants German or English).

Technical features NT 230	
Expansion stages	64, 128, 192 or 256 test points, expandable up to 512 test points
Low voltage test DC	
Test voltage	max. 12 V
Test current	max. 400 mA
Threshold continuity test	0.5 Ohm – 1 kOhm (optional four-wire measurement from 10 mOhm)
Threshold short-circuit test	20 kOhm – 1 MOhm
Component test	Resistors: 0.5 Ohm – 1 MOhm Capacitors: 10 nF – 10 mF Diodes, Zener diodes, LEDs, varistors (100V – 800 V, I = 1 mA), surge arrestors
High voltage test DC	
Test voltage	100 – 1000 V
Insulation test	100 kOhm – 1 GOhm
Breakdown test	Fast recognition of voltage breakdowns
General	
Power supply	External AC adapter, primary 90 – 240 VAC, secondary 24 VDC / can also be operated directly at 24 VDC
Interfaces	3 x digital I/Os (Extern Interface, expandable) for control, foot switch and signal lamp Serial interfaces RS232 / USB 2.0 Network Pin number probe
Dimensions (W x H x D, approx.)	235 mm x 140 mm x 275 mm
Scope of delivery	NT 230, AC adapter with main cable, pin number probe, USB flash drive with NT Control and documentation in PDF format

* PC not in the scope of delivery