

## NT Control

### Graphical user interface for programming and testing

The test systems of the NT series are predestined for application-specific test tasks in the field of wiring, back panel and function tests. They are operated and programmed with the graphic user interface **NT Control**.

The control software **NT Control** has already been installed more than thousand times on PC systems with Windows® operating system and is currently the most modern and most flexible user interface for wiring test systems.

### Test of wirings and assemblies

- Comfortable testing and programming environment for extensive and different test applications
- Significant error lists and single error displays of UUT faults
- Integrated multimeter and pin number functions
- Basic engine for individual programming of special test procedures
- Integrated List & Label editor for individual design of report and label layouts
- Importers and interpreters for further use of existing test programs of third-party systems available
- Converter for the generation of test data from CAD data available

# SOFTWARE

# NT Control

## Specialized software variants

**NT Control** offers you an easy test program generation and management. The following three application-specific variants provide results adapted to your needs:

- **CT** - cable test
- **CX** - cable test with intelligent adapter cables or interface devices
- **TT** - test table applications and

## Flexible testing

- Individual adjustment of the user interface of the test mode via graphical editor
- Diverse test panel samples, e.g. for different monitor resolutions, pre-installed
- Statistic function, including serial number and lot size
- Report and label printing, customizable via editors, various samples pre-installed
- Test data output into file, e.g. for external evaluation
- Display of errors in a list or as single errors

## Comfortable editing of:

- Continuity tests (nets or point to point connections)
- Short circuit and insulation tests (also as group test, depending on the hardware)
- Component tests (resistors, diodes, Zener-diodes, capacitors, LEDs, switches, high-ohmic devices, varistors, active / passive bus terminators, surge arrestors, suppressor diodes, inductors, impedances, magnet single-wire test etc.)
- Test point naming with up to 32 characters in different formats, direct or connector specific
- Documentation texts according to QM directives
- Connector, adapter or test module libraries depending on the variant
- Test system configurations

## Comfortable management by:

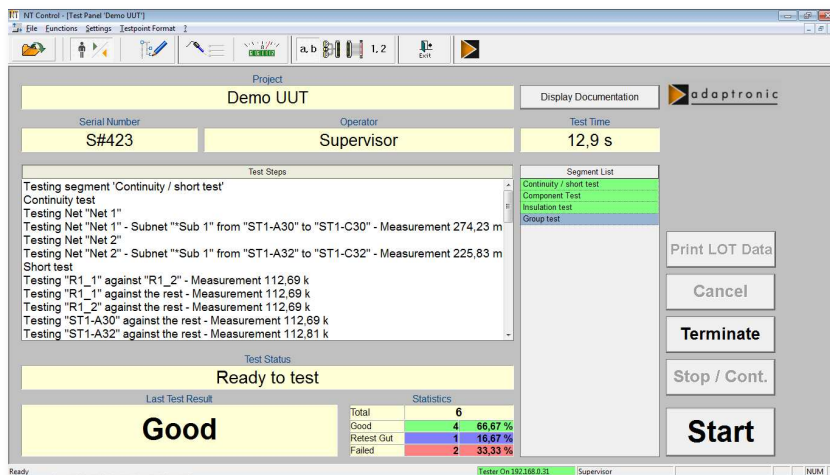
- Partition of test procedure into single test steps (segments)
  - different parameter setting for each segment
  - user defined test order
  - user messages
- 32-character test program names and test program groups
- Individual switching between different test point formats within the editor
- Test table support
- Mixing of program parts from several test programs
- Data checks for plausibility
- Information about amount of used test points, nets, test points per net and components
- Optional import filter for Cap-H, IVIS- and various other CAD data formats
- Interpreter for existing test programs of third-party systems

## System requirements:

- PC with Microsoft Windows® 7 Pro up to Windows® 11 Pro (country variants German or English)

# NT Control

## Testing



Operation within test mode via buttons which can be activated with mouse-click or with the touch function of a touch screen.

The excellent possibilities for visualization of test procedures guarantee a reliable and comfortable handling of the test system.

The user interface can easily be adjusted to special requirements regarding presentation and test procedure control.

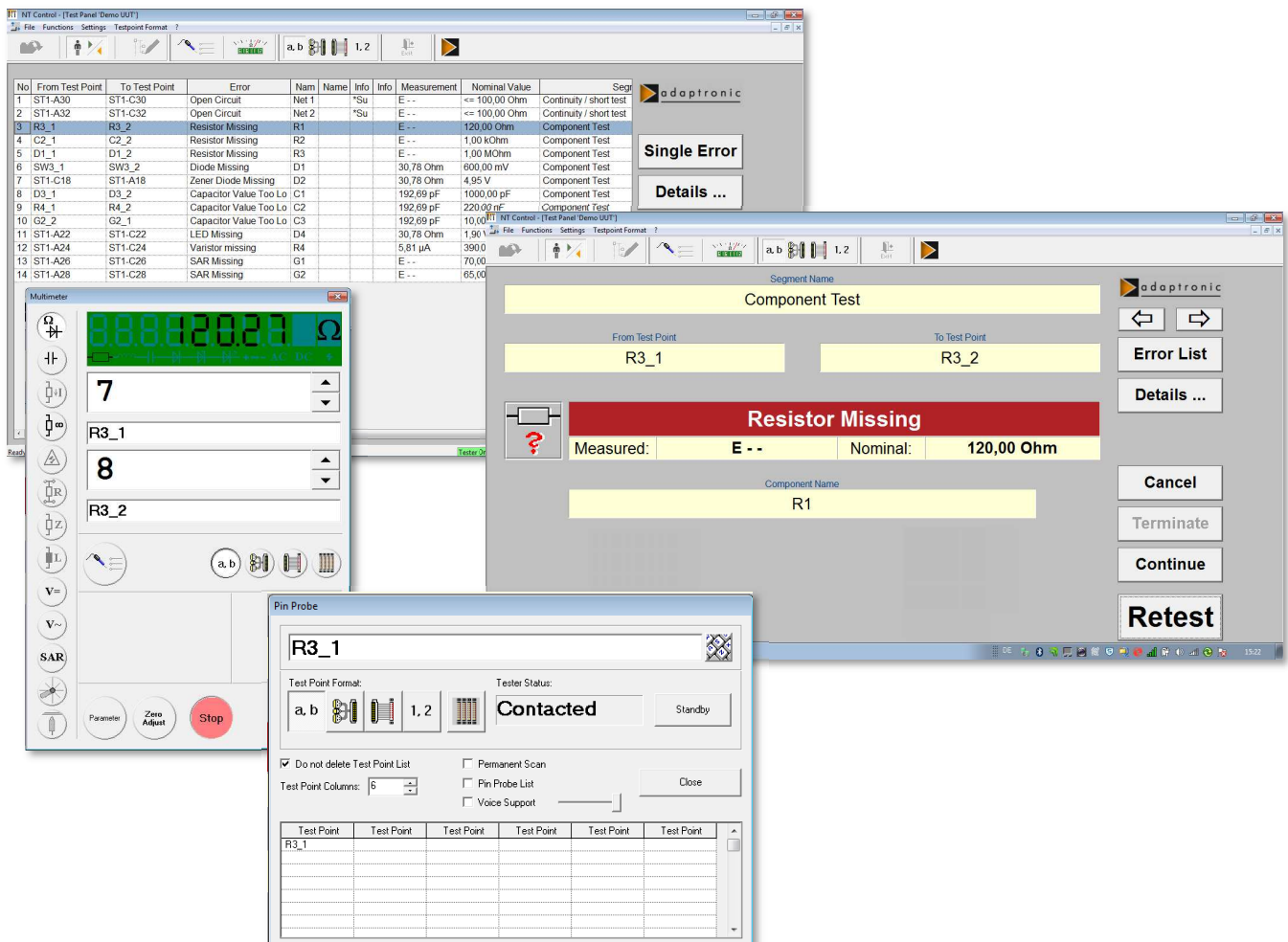
Test results are evaluated statistically and visualized in the test panel. UUT faults detected during test the are listed.

Additional information on each error -

type of error, affected test points, measured values etc. – are shown in the single error display.

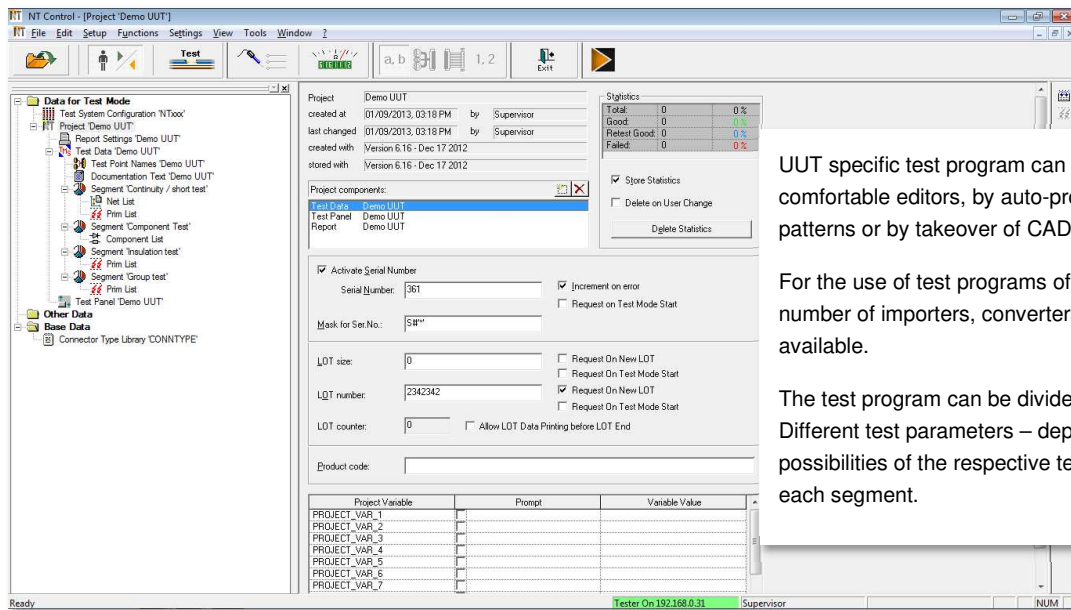
In addition, **NT Control** offers a multimeter function for specific single measurements.

With the pin number function test points can easily be identified on the UUT.



# NT Control

## Programming



UUT specific test program can be generated manually with comfortable editors, by auto-programming of golden patterns or by takeover of CAD data or Excel® lists.

For the use of test programs of third-party systems a number of importers, converters or interpreters are available.

The test program can be divided into several segments. Different test parameters – depending on the technical possibilities of the respective test box – can be assigned to each segment.

