



NT 211

TESTING MADE EASY

Small – powerful – economic

adaptronic wiring testers of the ultra-compact class as low voltage testers in NT version with graphical user interface NT Control.

The wiring testers NT 211 of the ultra-compact class are characterized by smallest dimensions with up to 512 test points in the base housing, expandable with test point units.

Whether stand-alone, with adapter cables, test consoles or test tables - the wiring testers of the ultra-compact class can be used everywhere.



Low-voltage wiring tester with PC control – the entry-level model with a wide range of functions

Up to
512
test points
in the base housing

Low voltage tests up to
12 VDC /
10 mA

Expandable up to
2048
test points with
test point units

NT 211

TESTING MADE EASY

Most important facts

The NT 211 is characterized by an excellent price-performance ratio and is especially optimized for operation on test consoles and test tables, as well as for stand-alone use:

- Support of adapter LEDs
- Push back test
- Assembly help during the manufacture of wiring harnesses
- Space saving design
- Interfaces for cutter, marker etc..
- Connection to a MES with OPC UA*

* optional

Test program generation and testing with NT Control

With the user-friendly software NT Control it is comfortable to generate, edit and to manage test programs as well, as to carry out tests. The data transfer between a PC with NT Control and a NT 211 takes place via network.

NT Control is necessary for the operation of the NT 211 and part of the delivery.

NT Control can be run on a PC* with the operating system Microsoft Windows® 7 Pro up to Windows® 11 Pro (country variants German or English).



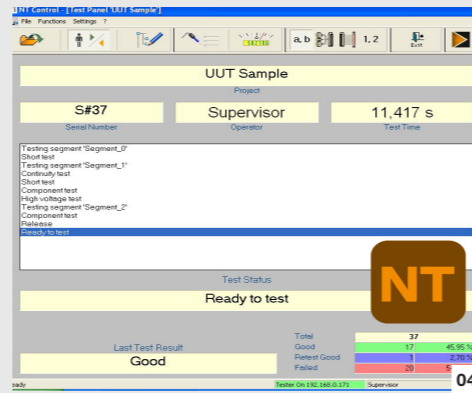
01



02



03



04

01

OPC UA server (optional)

02

Tester with scanner and label printer

03

Test point unit for test system expansion with 512 test points

04

Testing and programming software NT Control.

Your advantages

- Easy operation via PV with control software NT Control
- Comfortable test program editors
- Extensive display possibilities and tools for fault location in the unit under test
- Extensive result reporting to file, to printer or via database connection (optional)*
- Operation language German / English selectable
- Continuity test, short circuit test and component test
- Network interface
- Remote maintenance via network

Technical data NT 211

Test points	max. 512 test points in base housing, expandable with test point units up to 2048 test points
-------------	---

Low voltage test DC

Test voltage	max. 12 V
Test current	max. 10 mA
Threshold continuity test	1 Ω – 1 kΩ
Threshold short-circuit test	20 kΩ – 1 MΩ
Component test	Resistors: 1 Ω – 1 MΩ Capacitors: 10 nF – 10 mF Diodes, Zener diodes, LEDs

General features

Power supply	External power supply, primary 90 – 240 VAC, secondary 24 VDC / can also be operated directly at 24 VDC
Interfaces	– 3 × digital I/Os (Extern Interface, expandable) for control, foot switch and signal lamp – 1 × serial interface RS232 – 3 × USB 2.0 – Network – Pin number probe
Scope of delivery	NT 211, power supply unit with mains cable, pin number probe, USB flash drive with documentation in PDF format

Technical changes reserved – copyright 2024 adaptronic Prüftechnik GmbH, D-97877 Wertheim – PI-04-259-A