



NT 231

TESTING MADE EASY

Small – powerful – economic

adaptronic wiring testers of the ultra-compact class as low voltage testers in NT version with graphical user interface NT Control.

The wiring testers NT 231 of the ultra-compact class are characterized by smallest dimensions with up to 512 test points.

The smallest high voltage tester of the NT series – optimized for the operation with test consoles and test tables

Up to
512
test points

Low voltage tests up to
**12 VDC /
400 mA**

High voltage tests
up to
1000 VDC

Up to
27
digital I/Os

NT 231

TESTING MADE EASY

Most important facts

The KT 231 is characterized by an outstanding price performance ratio and is especially optimized for the operation with test consoles:

- Support of adapter LEDs
- Assembly help during the manufacture of wiring harnesses
- Space saving design
- Interfaces for cutter, marker etc..
- Connection to a MES with OPC UA*

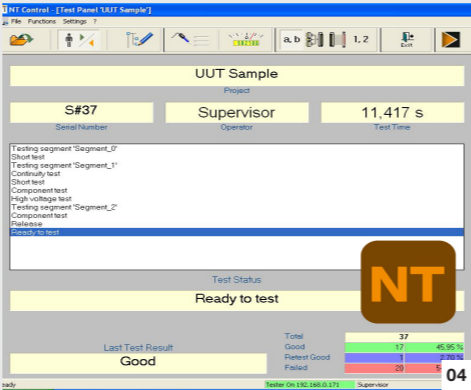
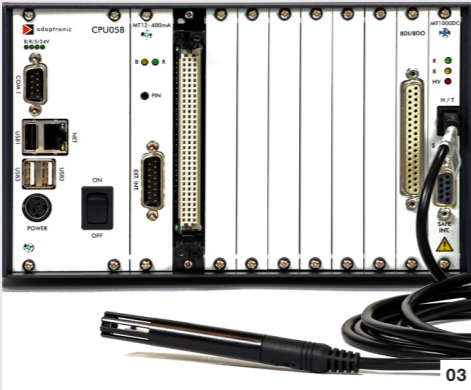
* optional

Test program generation and testing with NT Control

With the user-friendly software NT Control it is comfortable to generate, edit and to manage test programs as well, as to carry out tests. The data transfer between a PC with NT Control and a NT 231 takes place via network.

NT Control is necessary for the operation of the NT 231 and part of the delivery.

NT Control can be run on a PC* with the operating system Microsoft Windows® 7 Pro up to Windows® 11 Pro (country variants German or English).



- 01
OPC UA server (optional)
- 02
Tester with scanner and label printer
- 03
Options temperature/humidity logging and I/O-card 8DI/8DO
- 04
Testing and programming software NT Control.

Your advantages

- Easy operation via PV with control software NT Control
- Comfortable test program editors
- Extensive display possibilities and tools for fault location in the unit under test
- Extensive result reporting to file, to printer or via database connection (optional)*
- Operation language German / English selectable
- Continuity test, short circuit test, insulation test and component test
- Network interface
- Remote maintenance via network

Technical data NT 231

Test points	max. 512 test points
-------------	----------------------

Low voltage test DC

Test voltage	max. 12 V
Test current	max. 400 mA, depending on resistance
Threshold continuity test	0.5 Ω – 1 kΩ (optional four-wire measurement from 10 mΩ)
Threshold short-circuit test	20 kΩ – 1 MΩ
Component test	Resistors: 0.5 Ω – 1 MΩ Capacitors: 10 nF – 10 mF Diodes, Zener diodes, LEDs, Varistors (100 V – 800 V, I = 1 mA), surge arrestors

High voltage test DC

Test voltage	80 – 1000 V
Insulation test	500 kΩ – 1 GΩ
Break down test	Fast recognition of voltage breakdowns

General features

Power supply	External power supply, primary 90 – 240 VAC, secondary 24 VDC / can also be operated directly at 24 VDC
Interfaces	– 3 × digital I/Os (Extern Interface, expandable) for control, foot switch and signal lamp – 1 × serial interface RS232 – 3 × USB 2.0 – Network – Pin number probe
Scope of delivery	NT 231, power supply unit with mains cable, pin number probe, USB flash drive with documentation in PDF format

Technical changes reserved – copyright 2024 adaptronic Prüftechnik GmbH, D-97877 Wertheim – PI-04-260-A